



Cleveland Bridge Steel Company Ltd.

Creating Landmarks Worldwide





Inaugurated in 2009 under Cleveland Bridge Steel Company Ltd. - Jubail by Sheikh Abdullah Al-Rushaid, Chairman of the Joint Venture and of the Al-Rushaid Group.



Since its inception, under the leadership of Shaikh Rasheed Al Rushaid CLEVELAND has focused on the development in line with the strong social and economic policies and clear vision of the government of Kingdom of Saudi Arabia.

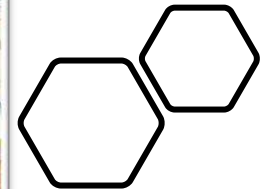
HISTORY OF CLEVELAND

1877
Cleveland Bridge
Established in the UK

1978
Cleveland Bridge ME
Established in Dubai

2000
Cleveland Group
Shareholding purchased by
Al Rushaid Petroleum
Investment Company

2009
Cleveland Bridge Saudi
Established in KSA



**About us,
Organization
Chart & Head
count**



ABOUT US

Cleveland Bridge Steel Company Ltd. is fabrication, company providing integrated 'design to build' solutions to large and complex offshore and onshore projects.

The company is a wholly-owned subsidiary of Al Rushaid Group, a Saudi multinational engaged in technology, engineering, construction, manufacturing.

With its sharp focus on customer service, **Cleveland** is uniquely positioned to deliver successful projects through enhanced responsiveness in all its engagements.

The company's more than a decades of rich experience is backed by its extensive capabilities across the value chain and a range of offerings that ensure demonstrable value for customers.

Employing digitalization and cutting-edge innovation, it delivers technologically superior solutions at every phase of project execution. The company further ensures reliability and on-time delivery by adhering to global quality norms and the most stringent of HSE standards.

Business Verticals

Power and Heavy Structures	Rail Bridges	Complex Structures	Stadia and Public Buildings	Road Bridges
<ul style="list-style-type: none"> • Skilled workshops • Transfer structures • Turbine Halls and PG manufacture • Method related engineering • Buildability • Logistics and transport • Interface management • ECI collaboration 	<ul style="list-style-type: none"> • Network Rail compliant • Range of product solutions • Trial assembly • Proven track record of meeting ROR's • Temporary works • Proven collaborative work experience • Positive impact in the community • Use local suppliers where possible 	<ul style="list-style-type: none"> • Commercial • Transport Structures • Stadia and Public Buildings • Nuclear • Power 	<ul style="list-style-type: none"> • Complex engineering solutions • Design development and Value Engineering • Working in live operational environments • Interfacing and collaboration with following trades • Modern methods – piece large installation • Project examples include: <ul style="list-style-type: none"> - Twickenham South Stand - Wembley Arch - Dubai Olympic Sports Complex 	<ul style="list-style-type: none"> • Cable Stay and Suspension Bridges • "E" and "U" decks • Lifting , swing and bascule bridges • Plate Girder Bridges • Footbridges • Truss and Bow string bridges • Temporary Bridging • Footbridges • Refurbishment and bridge strengthening



MISSION



Execution Par Excellence

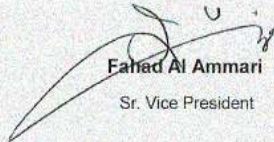
We are committed to evolving into a major Saudi Arabian and Middle East, occupying leadership position in the Oil and Gas industry.

Our people are our prime movers. We practice collaborative team-working with zeal, responsiveness and a sense of urgency. We encourage our personnel to demonstrate an entrepreneurial spirit and assume ownership for their actions.

We believe in an ethical work culture, With emphasis on governance in all business dealings.

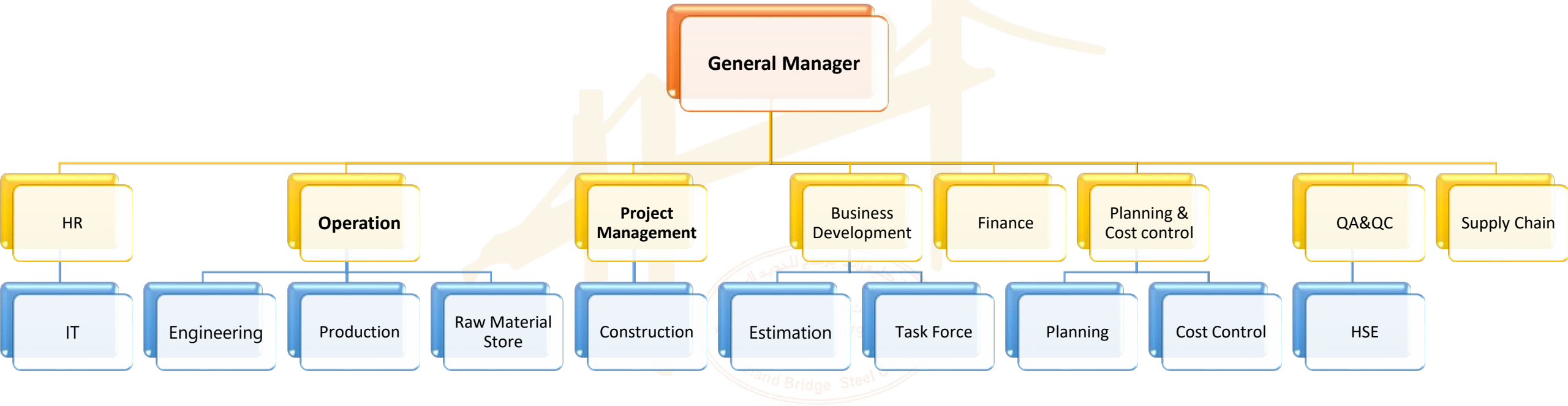
Our endeavor is to practice the highest levels of Quality, Health, Safety, Environmental and Information Security in all our operations.

Our focus is on sustainable value creation for all our stakeholders. We are passionate about our performance culture and committed to delivering excellence at every phase of our operations.


Fahad Al Ammari
Sr. Vice President

Date: 07-Mar-2024

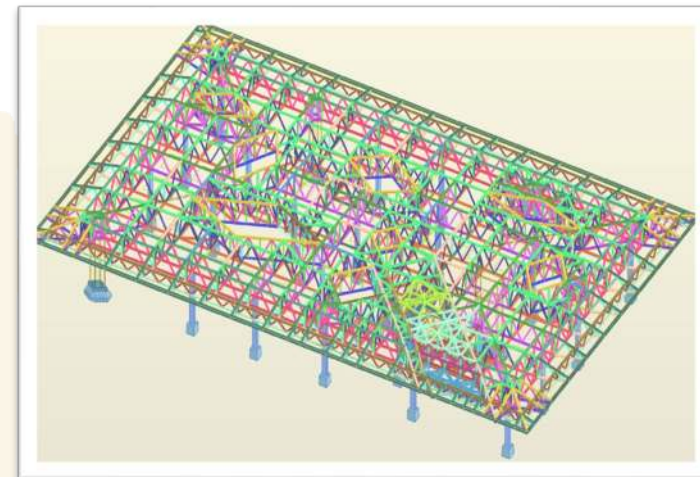
ORGANIZATION CHART OF CLEVELAND



HEAD OF COUNT

 <p>Managers : 12</p>	 <p>Engineers KSA : 9 Engineers India : 34</p>	 <p>Quality: 35</p>	 <p>Project : 13</p>
 <p>Planning & Cost : 7</p>	 <p>Sales & Estimation : 6</p>	 <p>Procurement & Logistic : 7</p>	 <p>Preparation : 50</p>
 <p>Safety : 14</p>	 <p>Administration : 36</p>	 <p>Supervisor : 15</p>	 <p>Foreman : 27</p>
 <p>Fabricators/Fitters : 215</p>	 <p>Welders : 175</p>	 <p>Erectors : 42</p>	 <p>Painters : 160</p>
 <p>Scaffolders : 17</p>	 <p>Packing & Dispatch : 35</p>	 <p>General Workers : 25</p>	 <p>Grand Total : 934</p>

Design & Engineering Support and Production Engineering



DESIGN & ENGINEERING SUPPORT OF CLEVELAND

Design & Engineering Facility

Cleveland started its engineering office in Jubail – KSA since 2009.

Cleveland extended its engineering office in India (Chennai) Year 2020 to support KSA operations.

3D Modeling and Automated Nesting

We have extensive experience and expertise in engineering design and 3-D modeling capabilities. We can develop specialized solutions to provide sound technical recommendations to our clients.

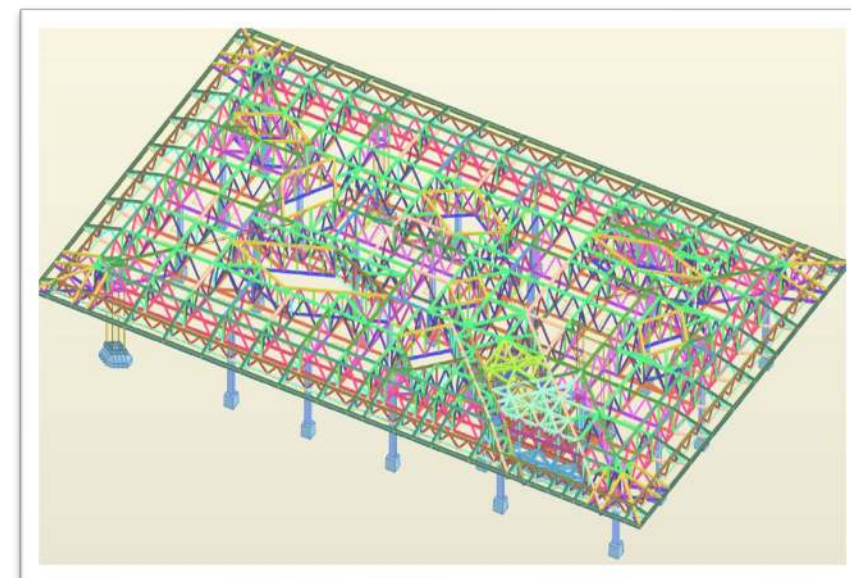
With the help of our expert engineering team and following software's, we can provide complete solution for Engineering, Estimating, Detailing and Fabrication/Erection of any kind of steel structure, much faster and with better quality.

FOR DESIGNING:

- Staad pro
- Idea Statica
- Ram Connection
- Etabs
- SAP2000

FOR DETAILING :

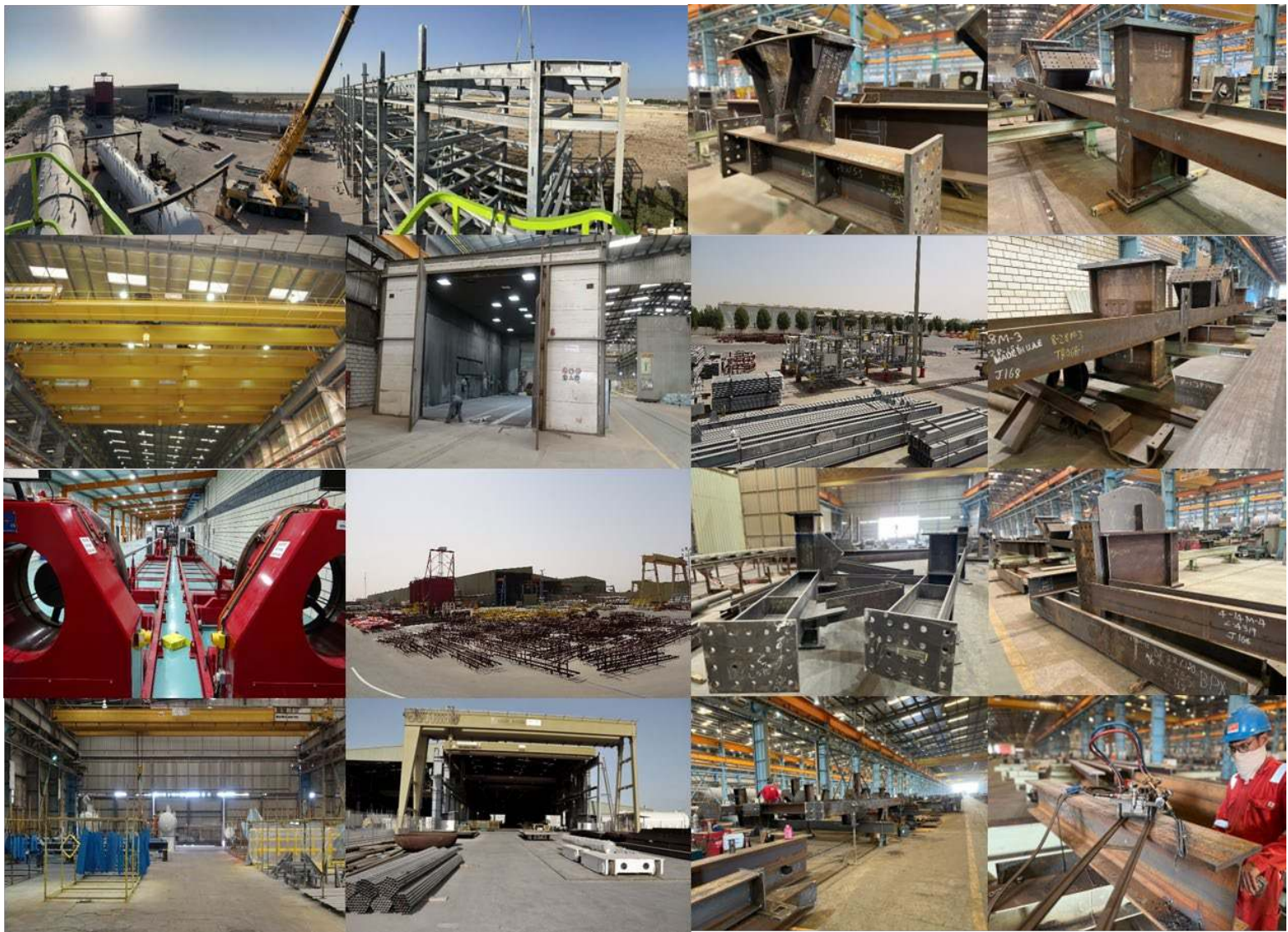
- TEKLA Structures
- AutoCAD



Fabrication Capabilities & Capacity



FABRICATION CAPABILITIES



CLEVELAND YARD

Total area of site :	118500 M ²
Covered fabrication areas :	46000 M ²
Preparation areas :	10400 M ²
Fabrication Bays :	11500 M ²
Paint cells :	7600 M ²
Open storage areas :	12428 M ²
Cranes :	Various overhead gantries
Internal areas :	10-50 Tones
External storage areas :	20-35 Tones
Max. production capacity :	Refer Production Capacity
Production employees :	934 (1200 when at peak)

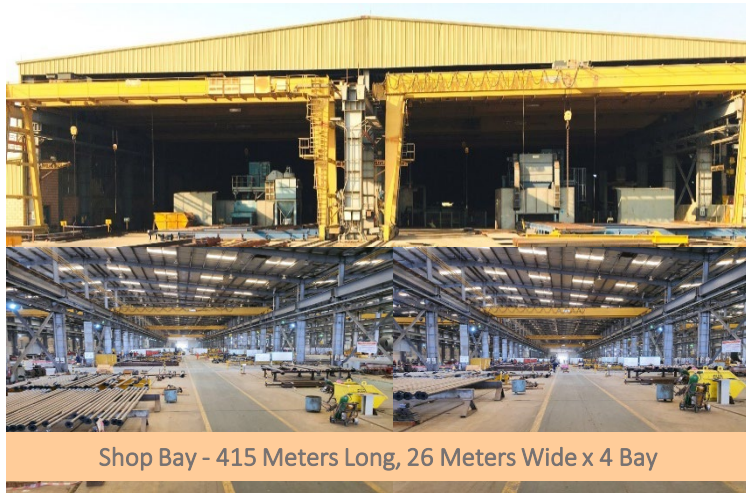
FABRICATION CAPABILITIES



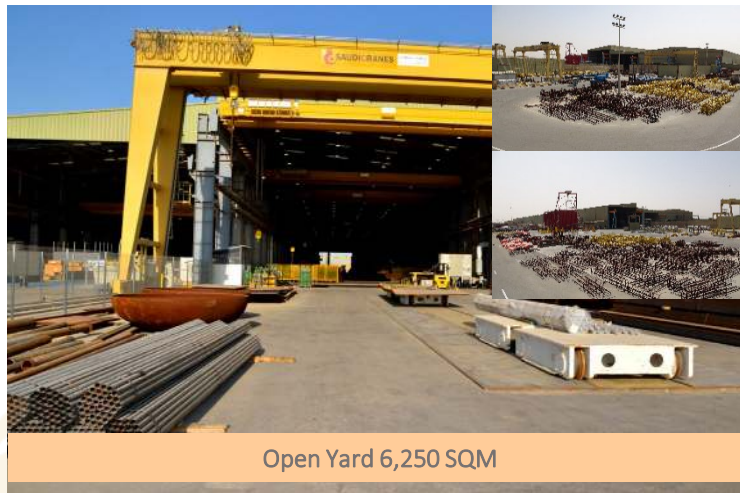
EES YARD

Total area of site :	62852 M ²
Covered fabrication areas :	5088 M ²
Preparation areas :	1700 M ²
Fabrication Bays :	3388 M ²
Open storage areas :	57764 M ²
Cranes :	Various overhead gantries
Internal areas :	20-50 Tones
External storage areas :	275 Tones
Max. production capacity :	Refer Production Capacity
Total area of site :	62852 M ²

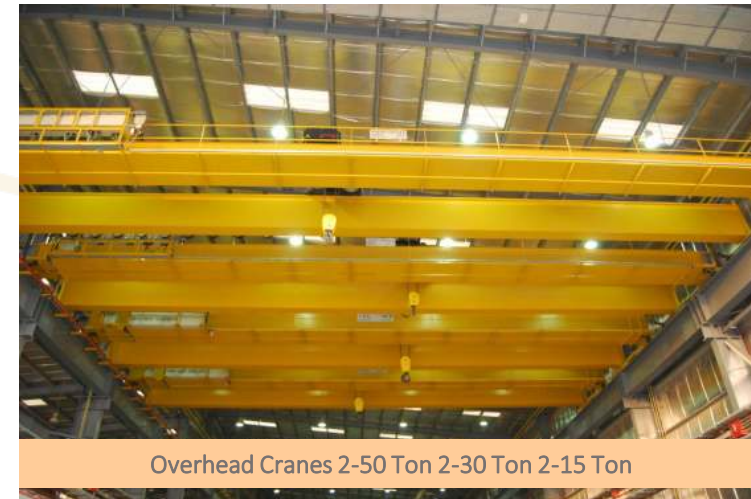
FABRICATION CAPABILITIES



Shop Bay - 415 Meters Long, 26 Meters Wide x 4 Bay



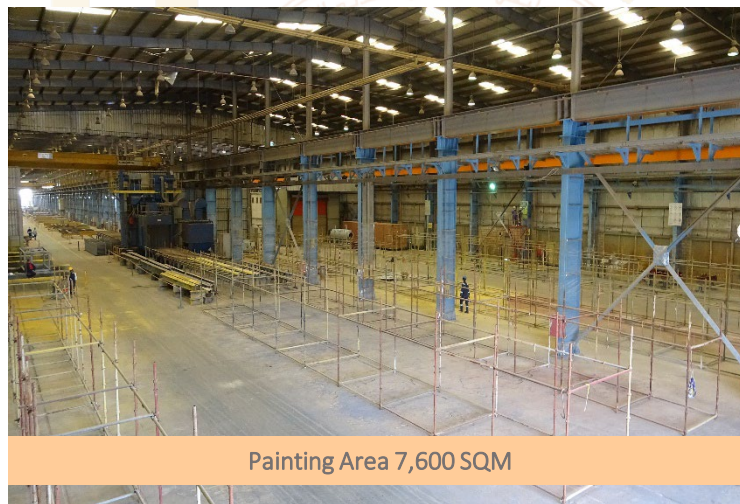
Open Yard 6,250 SQM



Overhead Cranes 2-50 Ton 2-30 Ton 2-15 Ton



BLAST ROOM



Painting Area 7,600 SQM



CRA Welded Overlay 1,080 SQM

9com, Facility Accreditation & Approvals



Cleveland



ISO 9001:2015
 ISO 14001:2015
 ISO 45001:2018

STEEL STRUCTURE

أرامكو السعودية
 saudi aramco



6000000663



QUALIFICATION OF CLEVELAND

Saudi Arabian Oil Company Tel: (966 13) 874-0958
Supplier Relationship Management Fax: (966 13) 874-1495
A-117, North Park 1
Dhahran 31311
Saudi Arabia

أرامكو السعودية
saudi aramco

June 23, 2016

SRQU-068-16

HATEM M. ABDELSALAM, GENERAL MANAGER
Cleveland Bridge Steel Company Ltd.
P.O. BOX 10017
JUBAIL 31961

Fax 013 340 8712

Mr. Abdelsalam,

We are pleased to inform you that your company is now included in the Saudi Aramco Supplier Information System under Vendor Code No. **10047906**, Plant No. **30005881** for the following products provided your company continues to meet relevant Saudi Arabian and Saudi Aramco standards.

9COM	Description
6000000663	STRUCTURE; STEEL

This approval, however, should not be construed as a commitment by Saudi Aramco to purchase from you. Being approved as a supplier only grant your company the opportunity, along with other approved sources, to respond to requests for submitting proposals in accordance with Saudi Aramco's established policies and procedures. All purchase agreements and orders will be issued based on the name and address stated in your commercial registration (CR), as stated above.

Saudi Aramco wishes to remind you that being recognized as a potential supplier is a privilege which carries with it serious obligations and responsibilities to act in a legal and ethical manner. We wish to remind you of the Saudi Aramco Supplier Code of Conduct (SCOC) which you acknowledged. Failure to abide by the principles set forth in the SCOC can result in adverse actions being taken by Saudi Aramco against you including suspension of you as a supplier. Saudi Aramco also expects each of its suppliers to satisfy each of the requirements of any purchase agreements or orders which might be placed and to act responsibly and reliably as a supply chain supplier.

Page 1 of 2

Saudi Arabian Oil Company Tel: (966 13) 874-0958
Supplier Relationship Management Fax: (966 13) 874-1495
A-117, North Park 1
Dhahran 31311
Saudi Arabia

أرامكو السعودية
saudi aramco

SRQU-068-16

Please note that evidence of representation from your supply source(s) must be supported by letter(s) of confirmation stipulating the territorial coverage and specific product lines involved. Your supply sources must have been accepted as qualified suppliers of the range of materials that you wish to supply. It is also important that you advise us immediately of any changes in the agreements which you have negotiated with your supply sources and/or any changes in your contact information such as postal address, telephone and fax numbers.

Suppliers should apply for Saudi Aramco Supplier Portal access by forwarding a request to portal-registration@aramco.com. The Supplier Portal is the main electronic business tool used between Saudi Aramco and its suppliers and serves to improve the flow and accuracy of key supply chain information.

Should you have any questions, please call Ahmad A. Al-Shaer on 874-0316.

Ali Al-Ruzaigi 6/23/2016
Ali Al-Ruzaigi, Supervisor
Supplier Registration & Qualification Unit

It is the responsibility of the supplier to notify Saudi Aramco Supplier Relations Management Unit of the following:

1. Change of Name/ Address/ Owner(s)
2. Any change of the supplier location (sub sourcing fabrication of major components)
3. Discontinue of fabrication or supply of approved commodities (9COMs, 9CATS and/or MSGs)

Page 2 of 2

QUALIFICATION OF CLEVELAND



RICI
 CERTIFIED

 ISO 9001:2015
 QUALITY
 MANAGEMENT
 SYSTEM

The management system of

Cleveland Bridge Steel Co. Ltd.

Area 3, Section N, Block 1, Lots 1,2 & 3 Jubail Industrial City 31961, Jubail, Kingdom of Saudi Arabia.

has been assessed and certified as meeting with the requirements of

ISO 9001:2015

Under the Scope:

"Design, Engineering & Fabrication of Structural Steel and Associated Supporting Products and Equipment for Oil, Gas, Chemical & Other Utilities Sectors."

IAF Code : 17

Certificate Number : SA210006

Issue date : 27-06-2024.

Valid till : 15-06-2027.

Original issue date : 16-06-2021.



IAS
ACCREDITED
Management Systems
Certification Body
MS28-104

Authorized Signature

RICI Company Ltd.
www.ricionline.com

*This certificate remains valid subject to successful surveillance audits and maintenance of management system as per certification rules and procedures of RICI Company Ltd.

*Further clarification regarding scope of this certificate and applicability of ISO 9001:2015 requirements may be obtained from the organization.

*This certificate remains property of RICI Company Ltd., to whom it must be returned upon request.



Page 1 of 1



Scan to Verify

7067, Salman Al Farisi 3002, Al Khalidiyah Al Janubiyah Dist., Dammam, Kingdom of Saudi Arabia
 Email: scheme@ricionline.com



RICI
 CERTIFIED

 ISO 14001:2015
 ENVIRONMENTAL
 MANAGEMENT
 SYSTEM

The management system of

Cleveland Bridge Steel Co. Ltd.

Area 3, Section N, Block 1, Lots 1,2 & 3 Jubail Industrial City 31961, Jubail, Kingdom of Saudi Arabia.

has been assessed and certified as meeting with the requirements of

ISO 14001:2015

Under the Scope:

"Design, Engineering & Fabrication of Structural Steel and Associated Supporting Products and Equipment for Oil, Gas, Chemical & Other Utilities Sectors."


IAF Code : 17

Certificate Number : SA210006

Issue date : 27-06-2024.

Valid till : 15-06-2027.

Original issue date : 16-06-2021.



IAS
ACCREDITED
Management Systems
Certification Body
MS28-104

Authorized Signature

RICI Company Ltd.
www.ricionline.com

*This certificate remains valid subject to successful surveillance audits and maintenance of management system as per certification rules and procedures of RICI Company Ltd.

*Further clarification regarding scope of this certificate and applicability of ISO 14001:2015 requirements may be obtained from the organization.

*This certificate remains property of RICI Company Ltd., to whom it must be returned upon request.



Page 1 of 1



Scan to Verify

7067, Salman Al Farisi 3002, Al Khalidiyah Al Janubiyah Dist., Dammam, Kingdom of Saudi Arabia
 Email: scheme@ricionline.com



RICI
 CERTIFIED

 ISO 45001:2018
 OCCUPATIONAL,
 HEALTH AND
 SAFETY MANAGEMENT
 SYSTEM

The management system of

Cleveland Bridge Steel Co. Ltd.

Area 3, Section N, Block 1, Lots 1,2 & 3 Jubail Industrial City 31961, Jubail, Kingdom of Saudi Arabia.

has been assessed and certified as meeting with the requirements of

ISO 45001:2018

Under the Scope:

"Design, Engineering & Fabrication of Structural Steel and Associated Supporting Products and Equipment for Oil, Gas, Chemical & Other Utilities Sectors."

IAF Code : 17

Certificate Number : SA210006

Issue date : 27-06-2024.

Valid till : 15-06-2027.

Original issue date : 16-06-2021.



IAS
ACCREDITED
Management Systems
Certification Body
MS28-104

Authorized Signature

RICI Company Ltd.
www.ricionline.com

*This certificate remains valid subject to successful surveillance audits and maintenance of management system as per certification rules and procedures of RICI Company Ltd.

*Further clarification regarding scope of this certificate and applicability of ISO 45001:2018 requirements may be obtained from the organization.

*This certificate remains property of RICI Company Ltd., to whom it must be returned upon request.



Page 1 of 1



Scan to Verify

7067, Salman Al Farisi 3002, Al Khalidiyah Al Janubiyah Dist., Dammam, Kingdom of Saudi Arabia
 Email: scheme@ricionline.com

[illegible]

Hessam Eldeeb

From: Sajid A. Hussain <sajid@Majdansteel.com>
Sent: Monday, November 10, 2014 8:22 AM
To: Hessam Eldeeb
Subject: Swiss Arabian Filling Company Registration Agreement

Dear Vendor:

I am pleased to inform you that your company **CLEVELAND BRIDGE STEEL CO. LTD.**, has been successfully registered with Mr. Ades.

From now onwards, your company may receive from Majdan or its affiliates, requests to participate in tenders (BEP, REQ), for Goods and/or Services and/or Projects in line with your capabilities. However, please do not feel this letter that it constitutes a guarantee that you will receive any such requests as those are dependent on many factors evaluated according to our discretion in regards to us.

Please note that your Vendor Code is: **8059**

You should also have received, an ID and password that will allow you to log onto Supplier Portal. Once Application systems.

If you have any further questions or require additional information then don't hesitate to contact me.

We appreciate your interest in becoming a Majdan vendor and look forward to the opportunity to work with you.

Best Regards,

 **Majdan Steel**
Sajid A. Hussain
General Manager - Sales & Marketing
Majdan Steel Co. Ltd.
P.O. Box 10000, Dammam, Saudi Arabia
Tel: +966 3 938 1000 Fax: +966 3 938 1001
sajid@majdansteel.com
www.majdansteel.com

This message and all attachments are confidential and intended solely for the use of the individual or entity to whom they are addressed. If you are NOT the intended recipient, you should not use, copy, retransmit or otherwise release on this e-mail or its contents, and immediately notify the Sender by return e-mail and delete all copies of this e-mail from your system.

NEOM

Registration with NEOM.

Congratulations! We are pleased to inform you that NEOM has approved your supplier registration. Cleveland Bridge Steel Company Ltd. has now been included in the supplier database of NEOM.


From now onwards, your company may receive request(s) to participate in tenders (RFP/RFQ) for Goods and/or Services and/or Projects in line with your competencies. However, please do not read into this email that it constitutes a guarantee that you will receive any such requests, as those are dependent on many factors evaluated according to our discretion as needs arise.

You will be notified when next steps of the supplier onboarding process require your attention.

We appreciate your interest in becoming A NEOM supplier and look forward to the opportunity to work with you.

You are receiving this email because your customer, NEOM, has identified you as the appropriate contact for this correspondence. If you are not the correct contact, please contact NEOM.

Offices | Data Policy | Contact Us | Customer Support

Powered by 



Vendor Registry

Registration Approval Letter

29-Sep-2025

Attention: : Cleveland Bridge Steel Company Ltd

CR Num: : 365027919

VAT Num: : 3604084900003

Location : Saudi Arabia

Dear Sir :

We are pleased to inform you that Cleveland Bridge Steel Company Ltd is now registered in AI-
RASHED TRADING AND CONTRACTING supplier Management system , Under Vendor No : 10426
 provided to your company continues to meet all RTCC standards.

This registration, however, should not be construed as commitment by RTCC to purchase from you, but your company will have opportunity along with other approved sources to respond to requests for submitting proposals in accordance with RTCC established policies and procedures.

We would like to thank you for your interest in RTCC, and take this opportunity to reiterate that it is RTCC policy to encourage the use of approved manufactured materials.



Eng. Mubarak Al-Majed
General Manager

This is an electronically generated letter by RTCC in verify supplier approval status , please contact supplier Help Desk at supplier@rtcc.com.sa

This document only represents the registration of the supplier or contractor with the company's record , which gives you the opportunity to present the best solutions.

The supplier is responsible for all information provided without liability to RTCC company.



06/26/2021 12:08 PM

Supplier Prequalification Feedback

Supplier Name	Vendor #	Date of Visit	Vendor Type	<input type="checkbox"/> Service provider <input checked="" type="checkbox"/> Manufacturer
Cleveland Bridge Steel Company Ltd	New	Nov 25 th , 2021	Evaluated Considerable Satisfactory Mfg. New Mfg. Desc:	Design, Engineering & Fabrication of Structure Items See below See below

Feedback Summary:

Cross factored representations from Sadara Chemical Company have evaluated the potential capabilities of your company for Design, Engineering & Fabrication of Structure Items to Sadara. Based on the site visit conducted at your facilities on Nov 25th 2021 along with your submittal documents for the prequalification purpose, the evaluation process concluded the following result:

☒ Unconditionally accepted

☐ Conditionally accepted


☐ Not accepted

Yes, Sadara may request additional information for further assessment based on its business needs. This prequalification feedback shall in no way represent an assurance, a promise or an offer that Sadara will award a business Cleveland Bridge Steel Company Ltd.

Cleveland Bridge Steel Company Ltd is approved for Design, Engineering & Fabrication of Structure Items for the following item:

MSG No.	MSG Desc.
31310000	FAB STRUCTURAL ASSM
	Structure steel

Best Regards,


 Thamer Alghafar – Procurement Support Services Manager

Sadara - Restricted Information

Sadara Chemical Company
 A Saudi National Company
 P. O. Box 11811, Tabuk 71461
 Kingdom of Saudi Arabia

شركة Sadara كيميائية
 شركة وطنية سعودية
 رقم بريد 11811
 طابوك 71461
 المملكة العربية السعودية

تم إرسال هذا المستند إلى:
 رقم هاتف 01-3523.000.000
 00966-0135230000

تم إرسال هذا المستند إلى:
 رقم هاتف 01-3523.000.000
 00966-0135230000

The Company

Registration with Saudi Entertainment Ventures.

Congratulations! **Saudi Entertainment Ventures** has approved your supplier registration. Cleveland Bridge Steel Company Ltd. has now been included in the supplier database of Saudi Entertainment Ventures.

You will be notified when next steps of the supplier onboarding process require your attention.


Your assigned Saudi Entertainment Ventures Vendor Code is: S10262248
(Please note this vendor code for your future reference.)

Your company may receive from Saudi Entertainment Ventures to participate in tenders (RFP/RFQ) for Goods and, or Services and, or Projects in line with your capabilities. However, this does not give promise that you will receive any of such requests, as those are reliant on factors and decision of our requirements.

We appreciated your interest and look forward to be working with you.

You are receiving this email because your customer, The Company, has identified you as the appropriate contact for this correspondence. If you are not the correct contact, please contact The Company.

Office | Data Policy | Contact Us | Customer Support

Powered by **SAP Ariba** 

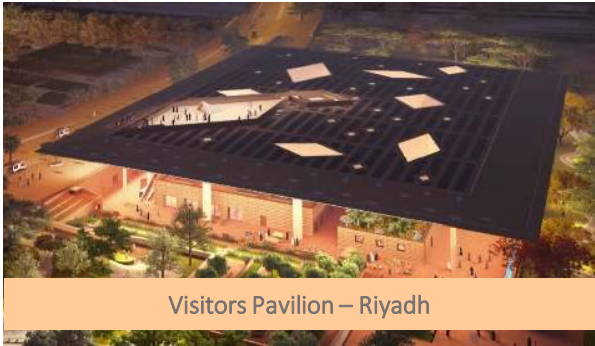
Major Job Lists



PRODUCTION CAPACITY

PRODUCTION CAPACITY YEARLY

Steel Structure – 50,000.00 MT



CLEVELAND MAJOR JOB LIST

Client	End User	Area/Structures	Weight / MT	Completion Status
SBG	King Abdullah Financial District	KAFD Parcel 1.14 - 5.06	7,500	Completed
Six construct	Six construct	Causeway bridge - Bahrain	6,000	Completed
Al Habtoor Group	HMR	Zayed university - Abu Dhabi	11,500	Completed
Binladin Contracting Group LLC	Binladin Contracting Group LLC	Dubai sports complex - Dubai	6,000	Completed
Shapoorji Pallonji International FZE	Binladin Contracting Group L.L.C	Dubai International Airport - Dubai	25,000	Completed
ARABTEC & AZMEEL	Saudi Aramco	Expand Dhahran Residential Community	11,200	Completed
Shapoorji Pallonji Mideast L.L.C	SAUDI ELECTRICITY COMPANY(SEC)	Saudi Electrecity Head Quarter -RIYADH	8,775	Completed
BSS	Dar Al Riyadh	KFAFRCP, Majmaah	3,550	Completed
Multiplex	The Football Association - London, U K	Wembley Stadium - London, United Kingdom	15,275	Completed
Freyssinet Saudi Arabia	King Slaman Park, Riyadh	Visitors Pavilion	10,800	Completed
GCC/SATORP	SATORP	Jubail Export Refinery	9,500	Completed
Tecnicas Reunidas(TR)	ARAMCO	HARADH & HAWIYAH FIELD GAS COMPRESSION PROJECT	14,500	Completed
STAR	SAUDI ARAMCO	Tertiary Structure For Berri & Marjan Project	8,500	Completed
Wison	SAUDI ARAMCO	Shaybah DPCU Project	8,619	Completed
Saipem	SAUDI ARAMCO	JAFURAH UPSTREAM PIPELINES AND WELLS TIE	3,250	Completed
ENPPI	SAUDI ARAMCO	Aramco -Debottleneck Onshore Plant-Safaniyah	15,012	Ongoing
BAKER HUGHES	SAUDI ARAMCO	Jafurah 2 Baseplate	3,148	Completed
L&T Hydrogen	SAUDI ARAMCO	Jafurah Phase 2 Package	14,500	Ongoing
Hyundai Engineering	SAUDI ARAMCO	[SACE2] Jafurah Phase II Utilities	23,500	Ongoing
EL SEIF ALEC	Qiddiya Water Park	Parkwide Rockwork Structures	16,798	Completed
Red Sea Global	AMAALA	Marina Lifestyle Hotel Triple Bay	4,245	Ongoing
CCC	NEOM	NEOM Green Hydrogen Elements Project – PM210011	7,500	Ongoing

MAJOR JOB WITH BRIEF DESCRIPTION

Client: Tecnicas Reunidas; **End User:** Saudi Aramco

Project: HARADH & HAWIYAH FIELD GAS COMPRESSION PROJECT, **Total Tonnage** was 14,500.00 MT.

The Scope of work for Cleveland Bridge Steel Company Ltd. was Engineering, Supply, fabrication, painting & delivery of Structural Steel for HARADH & HAWIYAH FIELD GAS COMPRESSION PROJECT. Total Tonnage of the project was around 14,500.00 MT. Structural steel consists of different structures such as Pipe Rack, Electrical Pipe Rack, Sunshades, Corrosion inhibitor shelters, Air compressor Shelters etc.



MAJOR JOB WITH BRIEF DESCRIPTION

Project Name	DPCU, Shaybah NGL Project (73 Modules)		
Location	Shaybah		
Project Owner	Saudi Aramco		
Pipe Rack Modules (ea)	44 Nos	Equipment Modules (ea)	29 Nos
Steel Structure	8,619.00 MT	Pipe (DI)	50379 Dia inch
Fire proofing (Wison)	50,156 Nos	Painting Area (SQM)	32,800 SQM
Total Module Wt. (MT)	12,517.00 MT	Insulation (SQM)	4,078 SQM
Electrical cable tray	672 LM	Instrument cable tray	774 LM

MAJOR JOB WITH BRIEF DESCRIPTION



Client: Wison Engineering

End User: Saudi Aramco

Project: DPCU, Shaybah NGL Project

The Scope of work for Cleveland Bridge Steel Company Ltd. is Supply, fabrication, galvanization & erection of Pipe rack modules & Equipment Modules. Total Tonnage of the project is 8,619.00 MT.



MAJOR JOB WITH BRIEF DESCRIPTION

Project Name	APOC PDH / UTOS Project Modularization		
Location	Jubail Industrial City II		
Project Owner	Advanced polyolefins & Advanced Investment		
Steel Structure	1,785.00 MT	Pipe (DI)	19,643 DI
No of Module (ea)	10 Nos	Painting Area (SQM)	13,546 SQM
Total Module Wt. (MT)	3,308 MT	Insulation (SQM)	8,180 SQM
Electrical cable tray	2,144 M	Instrument cable tray	5,808 M
Final FOB Date	28th March 2023	Fireproofing (Samsung)	5,072 SQM

MAJOR JOB WITH BRIEF DESCRIPTION

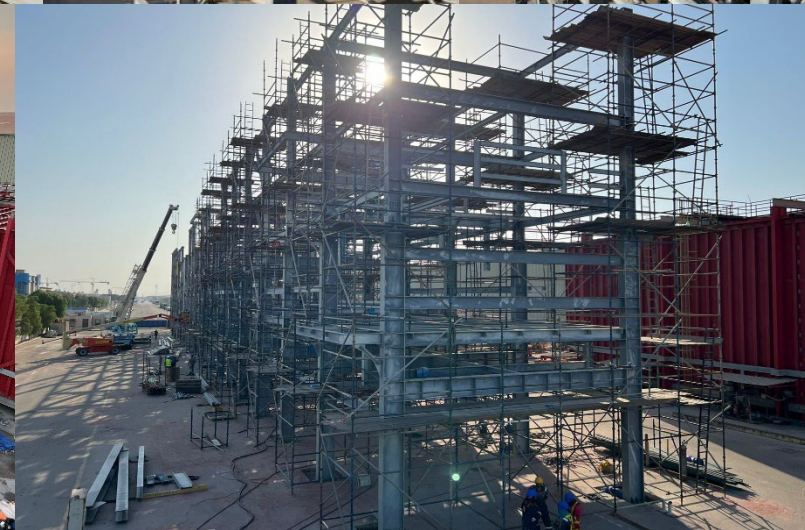


Client: SECL (Samsung)

End User: Advanced Petrochemical Company

Project: APOC PDH / UTOS Project

The Scope of work for Cleveland Bridge Steel Company Ltd. was Supply, fabrication, galvanization & erection of Pipe rack modules. Total Tonnage of the project was around 2,950.00 MT.



MAJOR JOB WITH BRIEF DESCRIPTION

Project Name	Aramco - Debottleneck Onshore Plant-Safaniyah		
Location	Safaniyah		
Project Owner	Saudi Aramco		
Scope of Work	Supply, Fabrication, Galvanization, 3 Coat Painting & Delivery of Steel Structure		
Steel Structure (MT)	14,950.00 MT	Galvanizing - HDG	15,012 MT
Handrail & Ladders (MT)	10 Nos	Painting APCS 26 & APCS 1B	14950 MT
Grating (m2) - 32 mm thick 5mmx32mm	3,308 MT	Painting APCS 26T	62 MT
Aluminum corrugated sheet – 0.7 mm thick	2,144 M	Grating Stair Treads (1100 x 280 mm)	1350 Nos
Final FOB Date	15 th Nov 2022	Fascia board 1 mm thick galvanized steel sheet	110 M Sq
Optional Item			
Intumescent epoxy Fireproofing – 2hours		18,000 M Sq	

MAJOR JOB WITH BRIEF DESCRIPTION

Jubail Export Refinery/ Saudi Aramco Total Refining and Petrochemical Company (SATORP) pet Coke Handling system.

The Project entails the development of 400,000 barrels per day (bpd) refining and petrochemical complex (the Refinery) located in the Jubail Industrial City on the east coast of the Kingdom. Pet Coke Handling system was the important package of the Refinery. An overland Conveyor covering a distance of 25 km from the refinery to the seaport will be used to store, transport and load petroleum coke, a solid residue obtained from petroleum refinement processes.

The Scope of work for Cleveland Bridge Steel Company Ltd. is to Supply, fabrication, galvanizing and erection of Structural Steel. Structural steel consists of special frames, chutes, Conveyor bridges for 25km, pipe racks/Supports. Longest span for conveyor Truss bridges was 62m & 60m which were passing over a highway, due to which the bridges were completely fabricated and assembled at shop (including grating and handrails) and transferred to site. Width and height of bridges were 6m X 6m approximately. There were around 207 numbers of Truss bridges. Total Tonnage of the project was around 9,500.00 MT.



MAJOR JOB WITH BRIEF DESCRIPTION



Our Client: SSEM; End User: Saudi Aramco
Project: REVERSE OSMOSIS & SEWAGE TREATMENT PLANT, JAZAN ECONOMIC CITY - 2300.00 MT

The Scope of work for Cleveland Bridge Steel Company Ltd. was Engineering, Supply, fabrication, painting, delivery & Erection of Structural Steel for REVERSE OSMOSIS & SEWAGE TREATMENT PLANT, JAZAN ECONOMIC CITY. Total Tonnage of the project was around 2,300.00 MT. Structural steel consists of different structures such as Pipe Rack, Access platforms, Staircases, Pipe supports, Shelters etc.

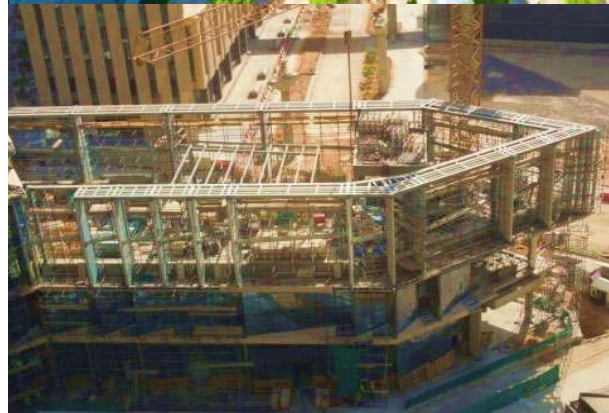


MAJOR JOB WITH BRIEF DESCRIPTION

The King Abdullah Financial District (KAFD) – 7,500.00 Tons (Saudi Binladin Group)

The King Abdullah Financial District (KAFD) Project is considered one of the most ambitious, distinguished projects existing in the Kingdom. It represents stands a highly important addition to the economic sector and prestigious architectural development in Riyadh. The King Abdullah Financial District (KAFD) is located on King Fahad Road in the Al Aqeeq area of Riyadh, Saudi Arabia. It consists of 59 towers including monorail in an area of 1.6 million square meters. It will provide more than 3 million square meters of space for various uses, 62,000 parking spaces and accommodation for 12,000 residents.

The Scope of work for Cleveland Bridge Steel Company Ltd. was Connection design, detailing, Supply, fabrication, painting and erection of Structural Steel. Structural steel consists in different Parcels (1.14, 1.15, 3.09, 3.10, 4.05, 4.10, 5.01, 5.02 & 5.06) like Steel Canopy, Podium Roof, Wadi steel etc. Parcel 5.01 consists of Steel canopy, lower veil, middle veil & Upper veil with tonnage of about 550MT. Total Tonnage of the project was around 7,500.00 MT.



MAJOR JOB WITH BRIEF DESCRIPTION



Wembley Stadium - London, United Kingdom - 15,275MT

Design, detail engineering, supply, fabrication and erection of 15,275mt of steel structure. main contractor Multiplex.

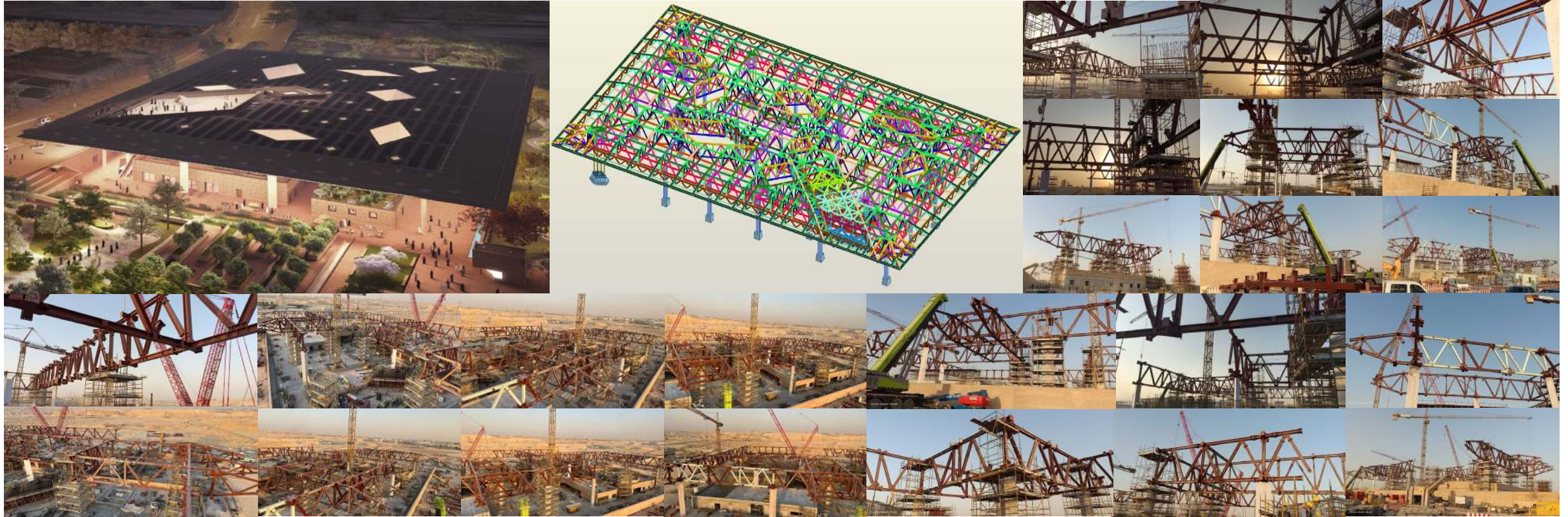
MAJOR JOB WITH BRIEF DESCRIPTION



Qiddiya Water Park - Parkwide Rockwork Structures - Riyadh - 16,798MT

The Scope of work for Cleveland Bridge Steel Company Ltd. is to Engineering, Supply, fabrication, fire proofing & erection of Structural Steel. Total Tonnage of the project is around 16,798.00 MT.

MAJOR JOB WITH BRIEF DESCRIPTION



King Slaman Park, Riyadh - Visitors Pavilion - 10,800MT

The Scope of work for Cleveland Bridge Steel Company Ltd. is to Engineering, Supply, fabrication, fire proofing & erection of Structural Steel. Total Tonnage of the project is around 10,800.00 MT.

MAJOR JOB WITH BRIEF DESCRIPTION

SEC Head Quarter Riyadh – 8,775.00 Tons (Shapoorji Pallonji)

Saudi Electricity Company Headquarters in Riyadh is a new high-performance office facility. The headquarters are seated in a state-of-the-art campus encompassing 265,000 square meters, with offices and amenities distributed across five interconnected buildings and the surrounding “wadi” garden landscape comprising one city block. The four cube-shaped office blocks (Tower A, B, C&D) are unified by a central podium volume at the center, which serves as the main reception and creates a social and functional heart for the company.

The Scope of work for Cleveland Bridge Steel Company Ltd. is Engineering, Supply, fabrication, painting, fireproofing and erection of Structural Steel. Structural steel consists of different structures as mentioned below.

1. Internal link Bridge at 2nd, 3rd & 5th Floor of span 28m in each Tower weighing about 95MT for each bridge. There were two girders of weight about 45MT connected with secondary beams. Each Girder (double I-section) was welded at Shop and transported.

2. External Link Bridge at 2nd & 4th Floor Connecting Tower A&B & Tower C&D of span 24m.

This was a Truss Bridge weighing 40MT. The width and height was 2.5mx4.5m. Each Bridge is welded at our factory totally (as bolted connection was not allowed due to architecture requirement) and transferred to site with special trailer.

3. Other Structures were, Roof Canopy Structure at roof which includes secondary frames to support the Photovoltaic and Solar water heater panels, Atrium façade columns at each Tower, Metal Deck Structure at roof to cover the atrium area, Podium Mosque & Shades, Podium Auditorium, and Service Building A&B & Guard House.



MAJOR JOB WITH BRIEF DESCRIPTION



Meydan Racecourse - Dubai - 13,290MT

Design, detail engineering, supply, fabrication and installation of 13,290MT of steelwork of Meydan Racecourse Stadium, Dubai. End user Dubai Racing Club.

MAJOR JOB WITH BRIEF DESCRIPTION



Dubai sports complex - Dubai - 6,000MT

Design, detail engineering, supply, fabrication and erection of 6,000mt of steel structure. main contractor BCG.

MAJOR JOB WITH BRIEF DESCRIPTION

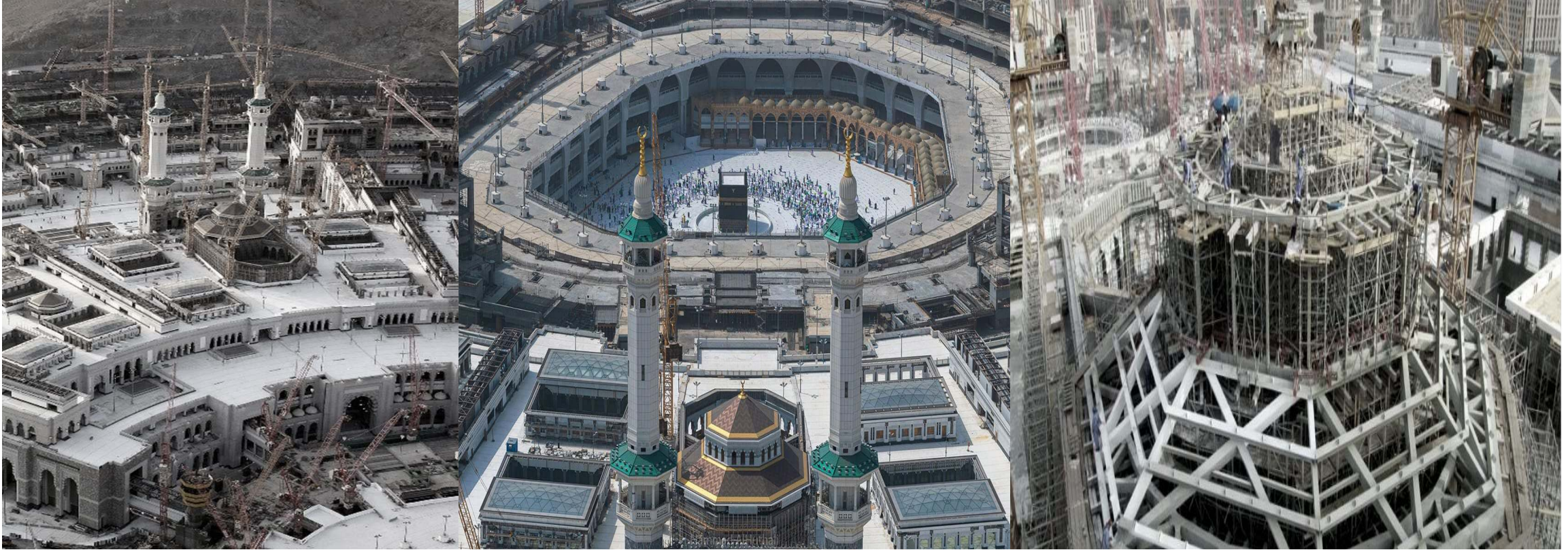
Project: SABB NEW HEAD OFFICE TOWER, RIYADH 2,750.00MT (El seif)

The SABB head office will be a 46,544-SM commercial office development comprised primarily of a 135-m tall office tower. A supporting podium is integrated and connected to the tower housing 7,013-SM of banking services, food and beverage areas and employee training facilities.

The Scope of work for Cleveland Bridge Steel Company Ltd. was Engineering, Supply, fabrication, painting, delivery & Erection of Structural Steel. Total Tonnage of the project was around 1,750.00 MT. Structural steel consists of different structures such as Roof hat, Podium, Steel Canopy, Atrium Support, Platform Steel, Floating Slab etc.



MAJOR JOB WITH BRIEF DESCRIPTION



Makkah dome - Makkah - 1,150MT

design, detail engineering, supply, fabrication and installation of 1,150MT of steelwork of floating ceremonial dome at masjid al haram, Makkah. main contractor PCT.

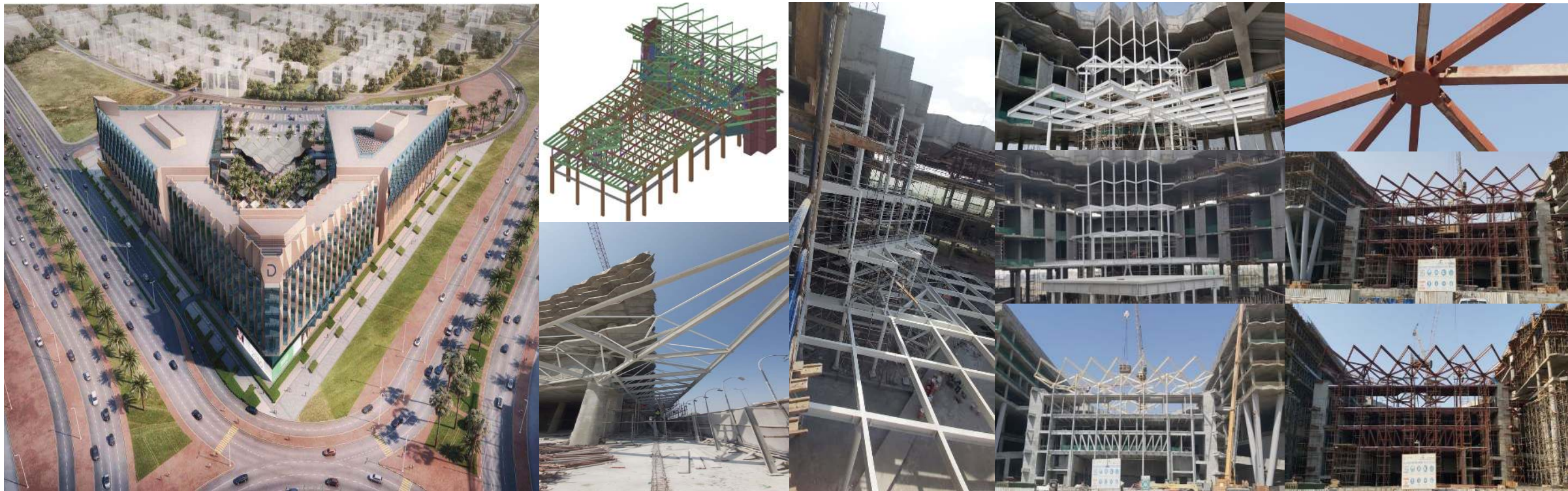
MAJOR JOB WITH BRIEF DESCRIPTION



Expand Dhahran Residential Community - Dhahran - 11,200MT

The Scope of work for Cleveland Bridge Steel Company Ltd. is to Engineering, Supply, fabrication, fire proofing & erection of Structural Steel. Total Tonnage of the project is around 11,200.00 MT. (750 Villas)

MAJOR JOB WITH BRIEF DESCRIPTION



Delta Mixed Used Development - Jeddah - 2,250MT

The Scope of work for Cleveland Bridge Steel Company Ltd. is to Engineering, Supply, fabrication, fire proofing & erection of Structural Steel. Total Tonnage of the project is around 2,250.00 MT.

MAJOR JOB WITH BRIEF DESCRIPTION



Causeway bridge – Bahrain

This project included complete offsite assembly of the bridge deck and arch structures. the completed bridge was launched on to a barge from a berth adjacent to jabel ali freezone and delivered to its destination in bahrain. the bridge structure was then strand jacked to its final position with 6,000.00MT steelwork. main contractor six construct.

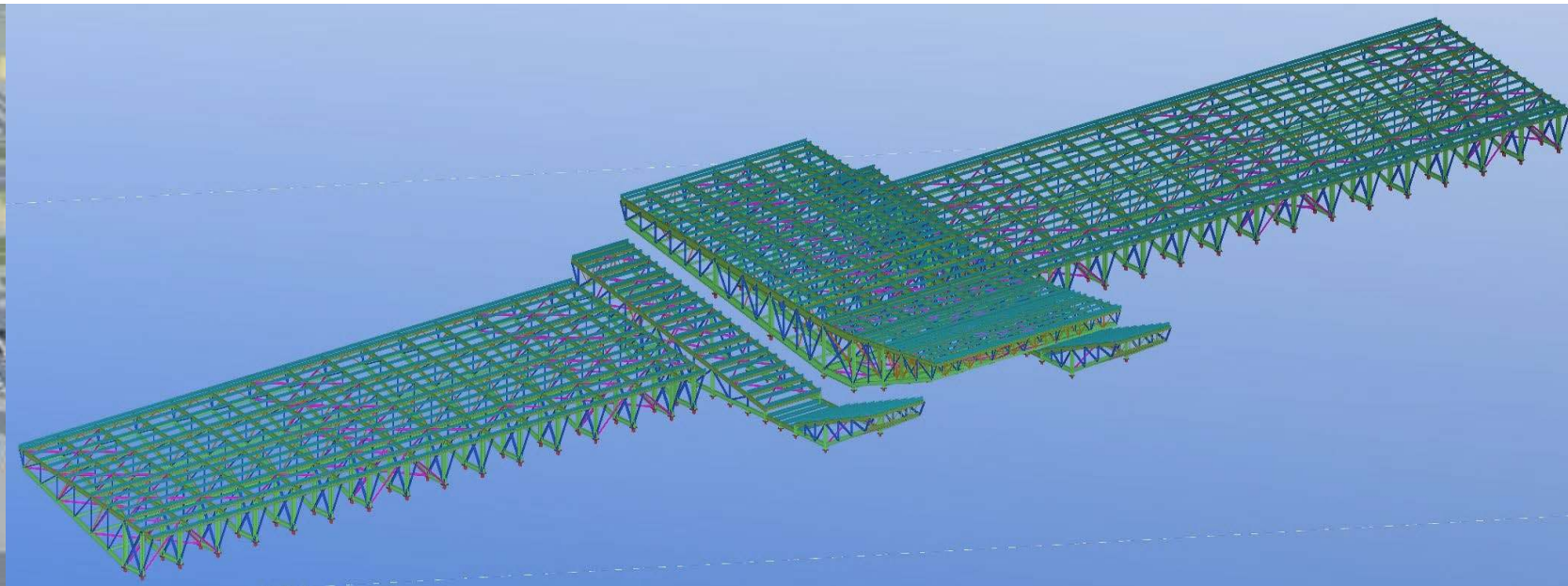
MAJOR JOB WITH BRIEF DESCRIPTION



Sudan bridge – Khartoum - Sudan - 1,350MT

The Scope of work for Cleveland Bridge Steel Company Ltd. is to Engineering, Supply, fabrication, galvanization, painting & erection of Structural Steel. Total Tonnage of the project is around 1,350.00 MT.

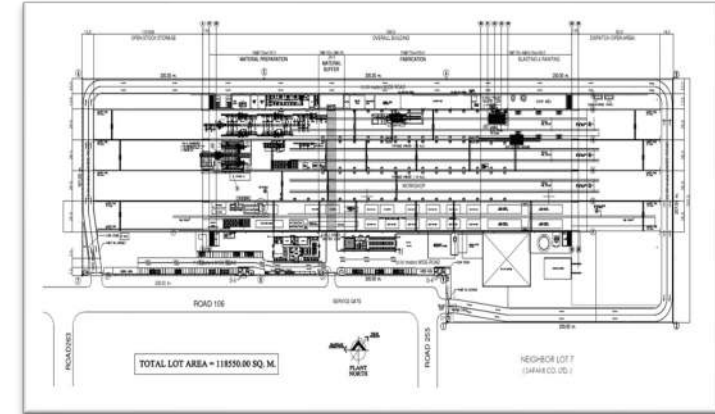
MAJOR JOB WITH BRIEF DESCRIPTION



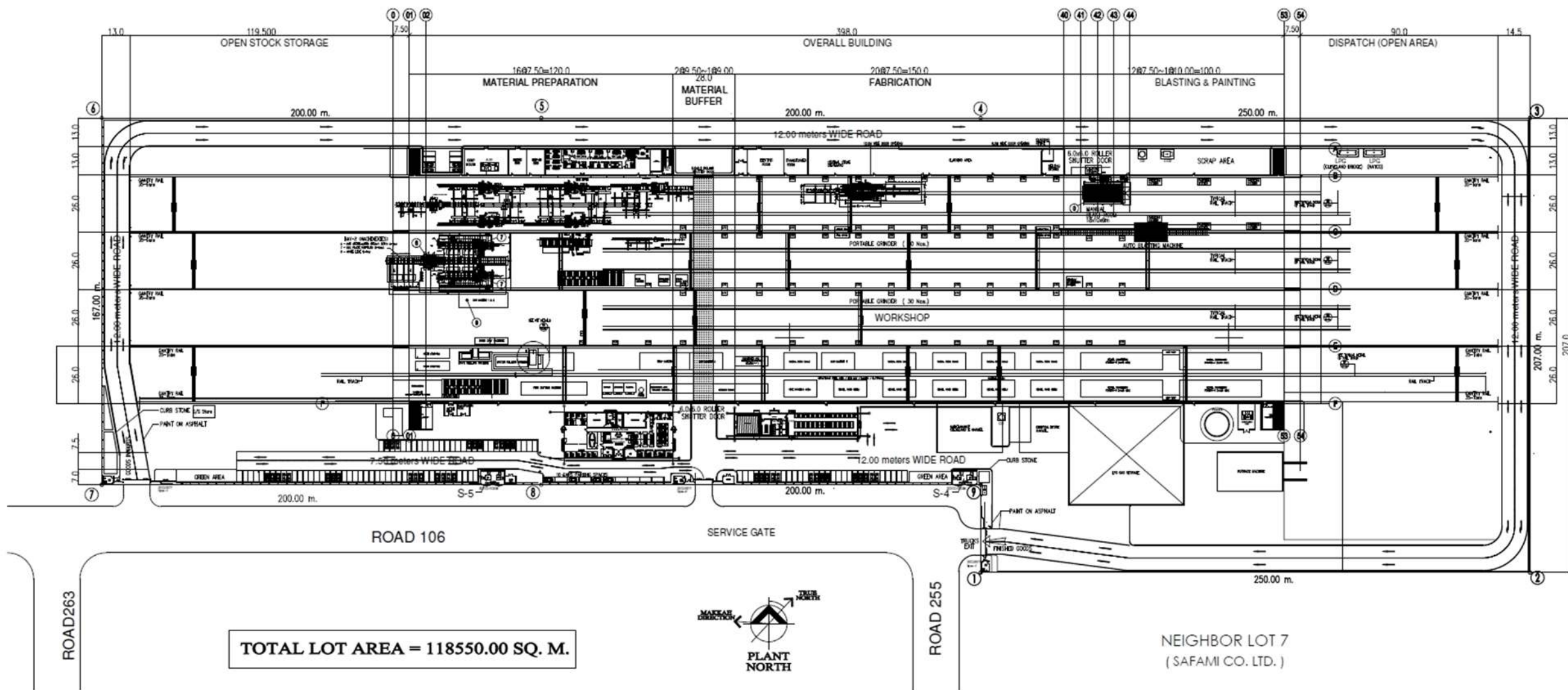
King Faisal Air Academy Project - Riyadh - 3,550MT

The Scope of work for Cleveland Bridge Steel Company Ltd. is to Engineering, Supply, fabrication, fire proofing & erection of Structural Steel. Total Tonnage of the project is around 3,550.00 MT.

Yard Layout



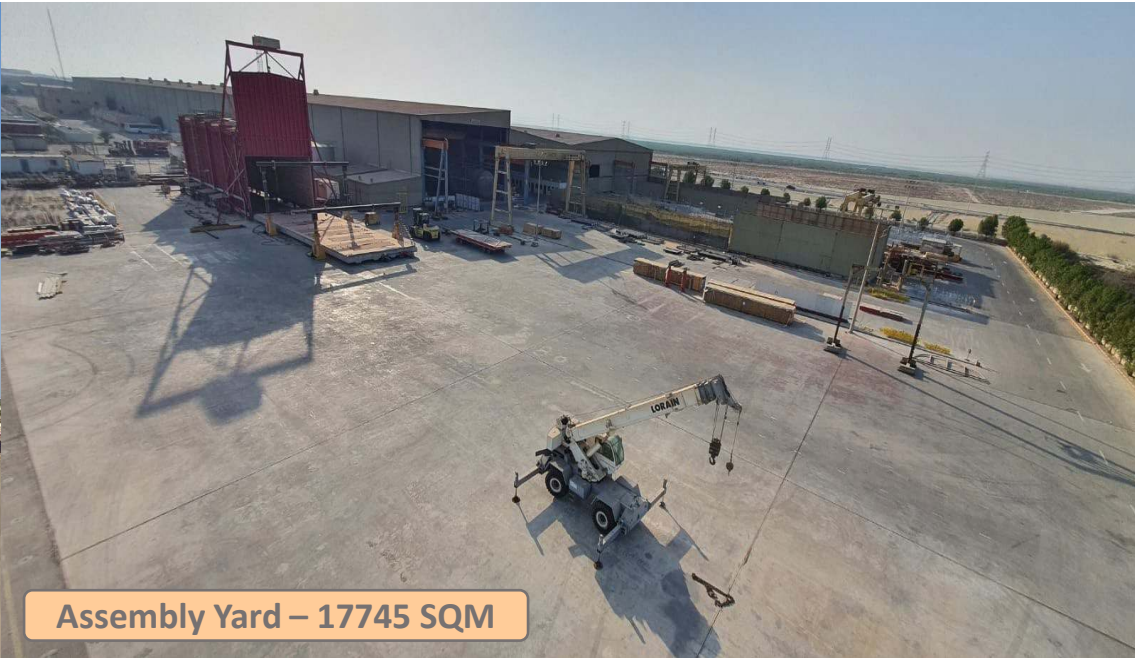
YARD LAYOUT



YARD OVERVIEW



Open Yard – 13208 SQM



Assembly Yard – 17745 SQM



Heat Treatment 30m x 10m x 10m



Painting shop – 5200 SQM



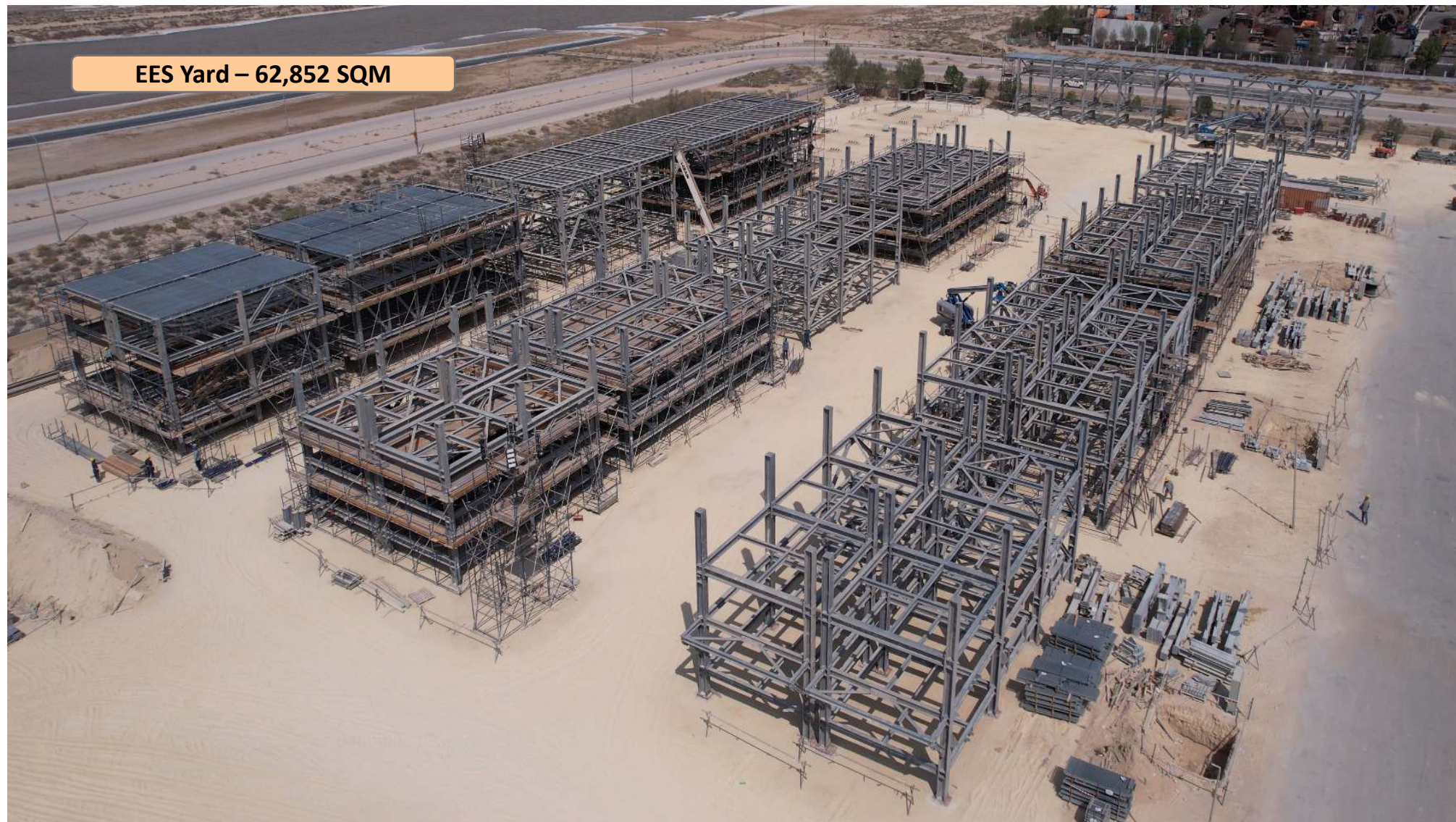
Workshop 26M wide 415M long 4 Bays

YARD OVERVIEW

Cleveland Yard – 118,500 SQM



YARD OVERVIEW



SUMMARY

- We care about our people
- Cleveland Bridge is committed to high quality and our project reference list supports that
- We have relevant experience for the type of work and with working with the best clients
- High commitment to delivering high class projects
- We are committed to open and transparent project execution



QHSE POLICY

QHSE POLICY Statement

Management of **Cleveland Bridge Steel Co. Ltd.** is totally committed to a policy of prevention and elimination of all undesirable events which may result in loss of lives and/or harm to Employees, Visitors, Clients, Vendor/Supplier, External Contractors, Damage to Properties, the Surrounding Community and Environment.

We are therefore committed to reduce our Environmental Impact, Prevention of Pollution, Protection of Environment and Continually improving our Environmental & Safety performance as an Integral and Fundamental part of our Service Processes.

We are always fostering a Quality & Safety culture with the Objective of developing and providing services with zero defects & incidents that are trusted and preferred by our Consumers. For that we are always trying to sustainably create value and to build customer and consumer trusts effectively and efficiently.

By setting and reviewing the IMS objectives and targets and subjected to continual improvement and communicating this to all employees/ interested parties. Cleveland Bridge aims to ensure its ongoing commitment to maintain the Quality and reduce Safety, Health and Environmental issue related to the processes and services.

Successful implementation of this commitment to provide our Contracting Services requires a thorough understanding and complete acceptance of the following.

- Compliance with all existing Rules & Regulations set by the Saudi Arabia Government, International Standard and Best Practice regarding Quality, Occupational Health & Safety as well as for Environmental Protection.
- It is the duty of every Staff member, Visitors, Clients, Vendor/Supplier and External Contractors to protect himself and the individuals associated with his activities from accidents which may result in injury or death.
- It is the Moral responsibility of the company and of its entire staff, to protect the surrounding Community and the Environment affected by its activities.
- Only Accident-free projects can be expected to be consistently productive and profitable.
- Through proper planning and compliance with all safety standards, procedures, best work practices, all accidents / incidents causing injuries and damage can be prevented.
- To boost up the performance of our employee through Awareness, Training and Knowledge of Integrated Management System norms.

All CBSCL staff are accountable to ensure successful implementation of this policy.



General Manager (GM)

CBS-IMS-P-01, Rev: 00 Dated: 01-04-2021



Questions?



CONTACT DETAILS



Please contact us for any queries you may have...

Eng. Sayed Elhout

General Manager

Mobile +966 56 836 55555

Tel +966(13)340 8901 Ext. 207

Fax +966 (13)340 8902

Email : sayed.elhout@clevelandbridge.com.sa

Website : www.clevelandbridge.sa

P.O Box 10017,Jubail Industrial City 31961



THANK YOU

P.O. Box 10017, Jubail Industrial City 31961, Kingdom of Saudi Arabia